



Next-level protection for every seed



SHIELD is our holistic approach to healthy Seminis® and De Ruiter® seeds, so you can grow with confidence, season after season.



Field Quality

To help ensure seed superior quality, we take a proactive approach through rigorous audits, meticulous inspections, and strict adherence to established production procedures.



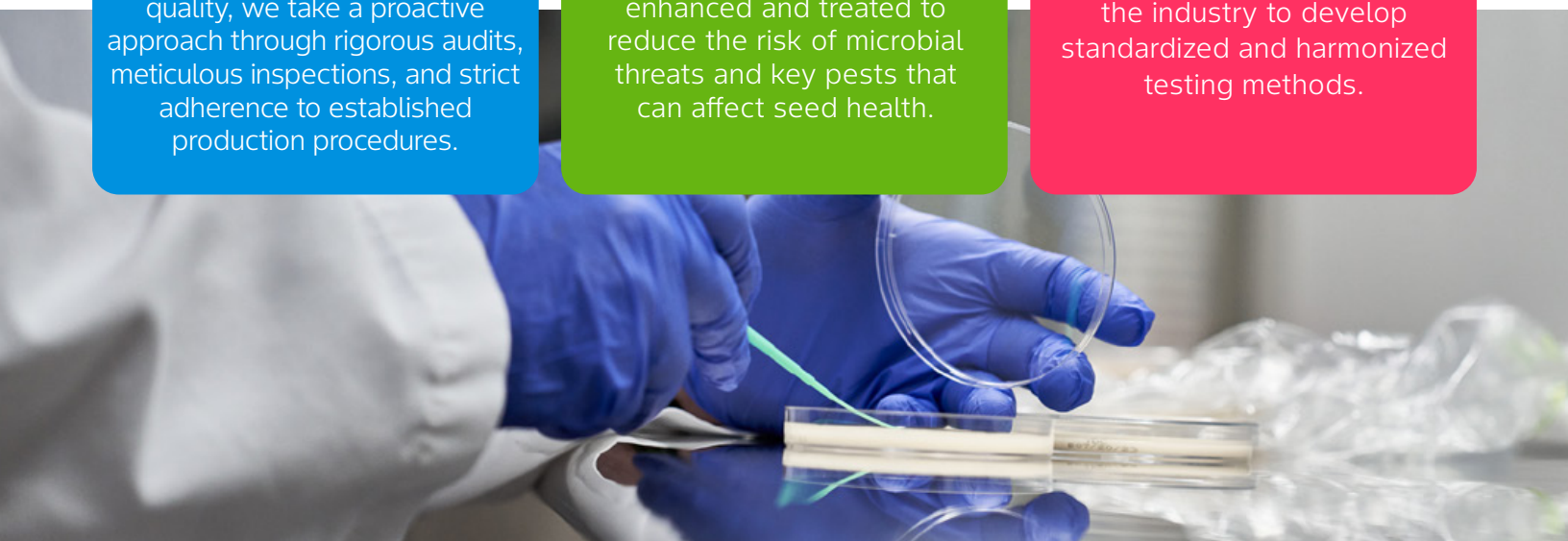
Seed Processing

Seed are cleaned, enhanced and treated to reduce the risk of microbial threats and key pests that can affect seed health.



Quality Testing

We collaborate with the industry to develop standardized and harmonized testing methods.



Field Quality



Rigorous Seed Production Guidelines

- We manage risks from water, people, materials and the environment.
- Hygiene protocols are tailored to specific issues and are used before entering fields & handling plants.
- Crop protection measures are customized for each crop stage.
- We have three production sites and one breeding site accredited by the Good Seed and Plant Practices (GSPP).

Industry Expertise

- Our teams follow Clean Seed Production (CSP) standards – a fundamental hygiene program developed at Vegetables by Bayer. CSP covers **Production Levels, Color Zones, Field Inspections, Training, and Hygiene Programs** to mitigate risk from water, people, seeds/seedlings, materials and the environment. Protocols are set by the global field quality team and must be followed by all visitors, growers, and workers.

Inspections That Matter

- We catch issues early through regular field checks.
- Internal audits ensure our high standards are followed.
- External inspections by local authorities confirm seeds meet legal requirements.

Fast Diagnostics

- Our global diagnostics lab supports every region, supplemented by local diagnostic capabilities.

Innovation & Digital Tools

- Our digital Field scoring system helps us track crop progress, identify issues, and improve seed quality.

We also invest in advanced diagnostic technology to detect diseases early and manage issues promptly.



Seed Processing



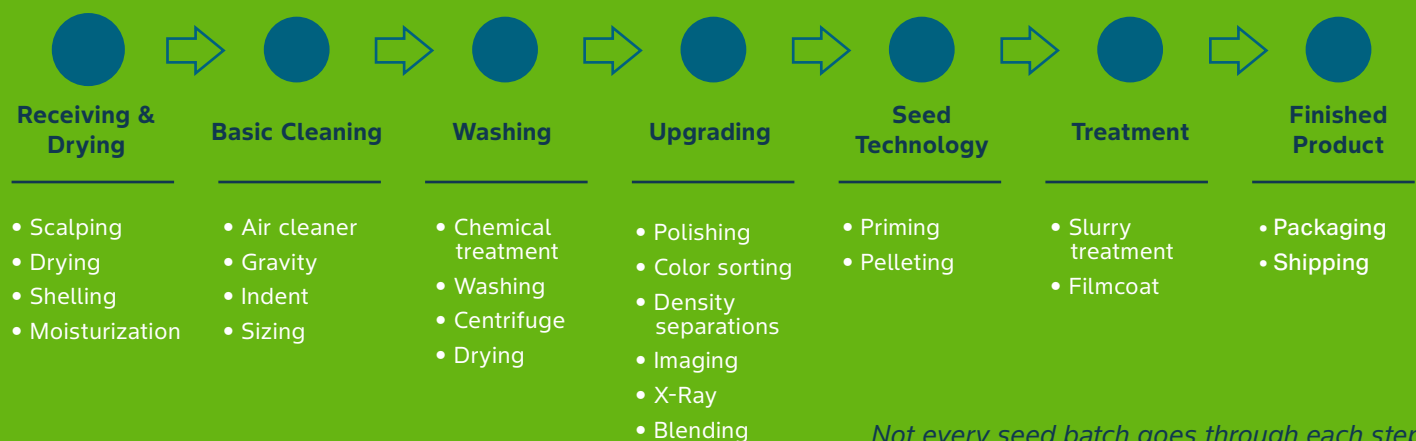
We clean seeds at two key moments – during harvest and again when they reach the processing sites – to reduce pests and prepare for peak performance.

- Our cleaning practices are safe, effective, and meet global requirements.
- We're committed to developing new technologies that are efficacious and environmentally friendly.
- Our global experts work directly with production teams and offer on-site support at operation plants.



Seed Processing Overview

Seed processing refers to the series of operations that seeds undergo after harvesting to prepare them for packing. This process includes several steps to remove impurities, achieve the optimal moisture level, sorting seed to ensure uniformity, enhancement, application of treatments to protect seeds from pest and diseases during storage and germination.



Not every seed batch goes through each step.

Quality Testing



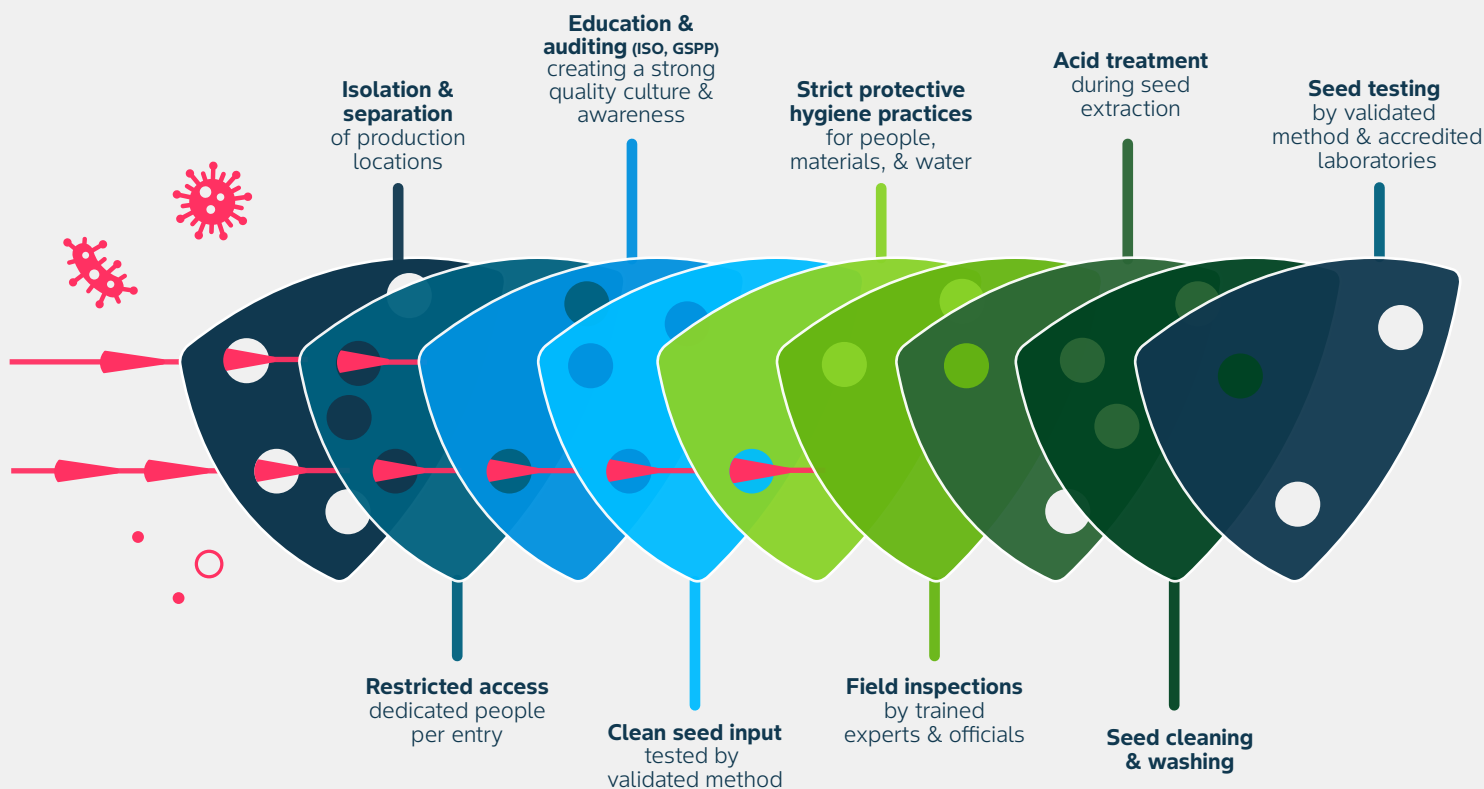
Whether it's for glasshouse or open field, we have strict testing processes

- We test every product line – from breeder seed to commercial seed.
- Our test plans focus on the pests and diseases that matter most to your success.

Trusted & proven

- Our U.S. testing lab is certified by the USDA National Seed Health System.
- Our labs in the U.S. the Netherlands and Thailand are accredited by the local governments.
- We follow the International Seed Health Initiative (ISHI) testing methods.
- Our labs in The Netherlands and in the U.S. are NALcertified for selected tests.

SHIELD snapshot



By using multiple layers/barriers, we safeguard seed quality.