



MELON GUIDE 2023–2025

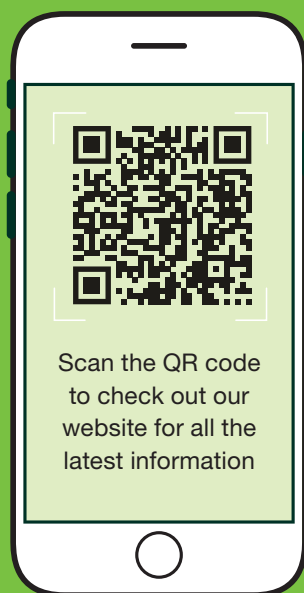
AUSTRALIA



LET'S GROW BETTER TOGETHER

Seminis is proud to operate on the belief that every generation can be better than the last. It's a principle that goes well beyond innovative vegetable seed development. We believe that if tomorrow is to be better for our partners, it's up to us to work in collaboration to make it so.

This strongly held conviction allows us to fully understand and deliver on the unique needs of open-field and protected growers in greenhouse growing environments. Partnering with everyone from fresh market growers to processing professionals, and small scale to large commercial farmers, we offer more than 20 different crops in more than 150 countries and territories.





CANTALOUPE



SVMF7774

SVMF7774 is a main season cantaloupe with long shelf life that has demonstrated in trials a consistently high fruit set, high uniformity, a strong plant, and fruit quality that is competitive with current commercial hybrids. SVMF7774 has a strong net, firm orange flesh and a tight cavity.

FEATURES

Maturity:

Mid to Late

Vine vigour:

Strong

Fruit size

2.0-2.2kg

Fruit shape:

Round to slightly oval

Internal fruit colour:

Dark orange

Resistance:

Full disease resistance claim to be confirmed



FLAVOR TIME™

Flavor Time™ is cantaloupe hybrid possessing a new maturity indicator concept. The skin turns a golden yellow colour under the net, indicating fruit is ripe and ideal maturity. Suitable to spring, summer and early autumn production windows in Southern Australia.

Harvest Indicator: Colour of the skin turns golden under the net, peduncle changes to a light yellow colour and netting creeps up the peduncle.

FEATURES

Maturity:

Mid

Vine vigour:

Strong

Fruit size

2.2-2.5kg

Fruit shape:

Round-Oval

Internal fruit colour:

Dark orange

Resistance:

HR CYSDV/Fom:0-2/A

ITALIAN



FURBETTO

Furbetto is a single serve Italian cantaloupe. When grown in preferred window fruit size reaches a maximum of 1.6kg with dark orange flesh and small cavity.

Harvest Indicator: Colour of the suture turns pale green.

FEATURES

Maturity:

Mid

Vine vigour:

Strong

Fruit size

1.4-1.6kg

Fruit shape:

Round-Oval

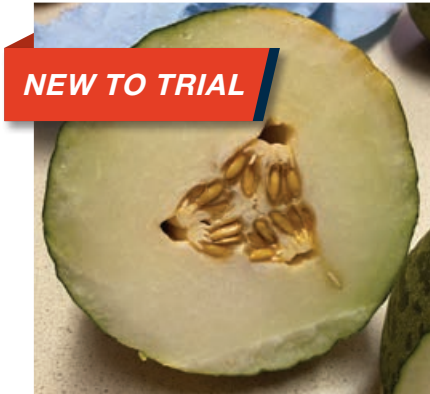
Internal fruit colour:

Dark orange

Resistance:

HR Fom:0-2/Px:1,2,5

PIEL DE SAPO



PORTUS

Portus is a new Piel de Sapo melon. Initial trial results indicate that the preferred timeslot is early and late season plantings in southern Australia and cooler windows in northern Australia. Fruit are large with a small cavity and sweet white flesh.

Harvest Indicator: Colour change in the skin, from most vivid green tones becoming more matte with some ochre. Significant increase in netting on the skin of the fruit. Wilting of the fruit peduncle, as well as the small cracking at its base.

FEATURES

Maturity:
Early to Mid

Vine vigour:
Medium

Fruit size
2.8-3.2kg

Fruit shape:
Oval

Internal fruit colour:
White

Resistance:
HR MNSV/Fom:0,1/Ag
IR Px:1,2,3.5A,5

RONCERO

Roncero is a new Piel de Sapo melon. Initial trial results indicate that the preferred timeslot is warm season plantings in southern Australia and early and late planting windows in northern Australia. Fruit are large with small cavity and sweet white flesh.

Harvest Indicator: Colour change in the skin, from most vivid green tones becoming more matte with some ochre. Significant increase in netting on the skin of the fruit. Wilting of the fruit peduncle, as well as the small cracking at its base.

FEATURES

Maturity:
Early to Mid

Vine vigour:
Medium

Fruit size
2.3-2.5kg

Fruit shape:
Oval

Internal fruit colour:
White

Resistance:
HR MNSV/Fom:0,1/Px:1,2,5/Ag
IR Px:3.5A

GALIA

VERDASCO

Verdasco is a long shelf life Galia melon variety suitable for warm season production conditions. This new hybrid comes with a higher resistance package. It has a competitive level of production, concentrated setting and uniform fruit (size and shape).

Harvest Indicator: Colour change in the skin from bright to golden yellow.

FEATURES

Maturity:
Mid

Vine vigour:
Medium

Fruit size
1-1.3kg

Fruit shape:
Round-Oval

Internal fruit colour:
Pale green to green

Resistance:
HR MNSV/Fom:0,1/Ag
IR Gc:1/Px:1,2,5,Px3.5A

HONEYDEW



CLASSIQUE

Classique is a firm, crisp, green-fleshed melon that is excellent for export. It produces consistent yields of high quality fruit under warm growing conditions.

FLAVOR JOURNEY

A consumer favourite thanks to its sweet taste! Flavor Journey is a green-fleshed, long shelf life honeydew with a higher brix. Early sugar accumulation allows for fruit to be harvested with bright white skin. Firm flesh allows for export markets as an option. It's grown in the Classique time slot and offers uniform fruit size and high yield potential.

GLACIER

Glacier is the largest fruit size offered in the Seminis honeydew range and is suitable for production in cooler production windows.

FEATURES

Maturity:
Mid to late

Vine vigour:
Strong

Fruit size
2.0-2.2kg

Fruit shape:
Round

Internal fruit colour:
Green

Resistance:
HR Fom:0,2
IR Px:1

FEATURES

Maturity:
Mid to late

Vine vigour:
Strong

Fruit size
2.0-2.2kg

Fruit shape:
Round to slightly oval

Internal fruit colour:
Green

Resistance:
IR Px:3.5,5/Ag

FEATURES

Maturity:
Mid

Vine vigour:
Strong

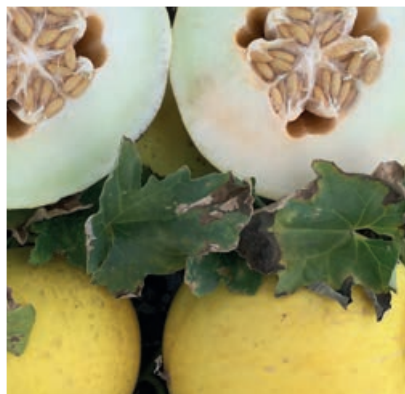
Fruit size
2.3-2.5kg

Fruit shape:
Oval

Internal fruit colour:
Green

Resistance:
-

HONEYDEW



EL PASO

El Paso is a yellow-skinned honeydew with high yield potential. This variety produces large fruit enabling it to be grown in cooler production windows.

FEATURES

Maturity:

Mid

Vine vigour:

Medium

Fruit size

2.3-2.5kg

Fruit shape:

Round to oval

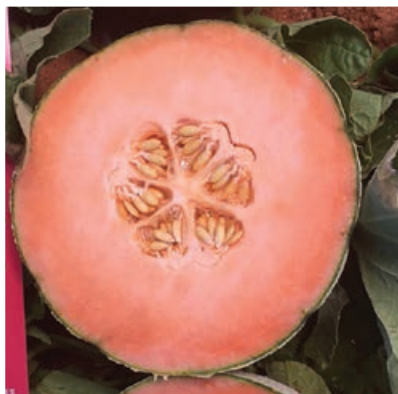
Internal fruit colour:

White

Resistance:

HR Fom:0,2

CHARENTAIS



SV9790MC

SV9790MC is the largest charentais currently available from Seminis Australia. This hybrid is excellent internally with dark, orange-to-red flesh and a small, tight cavity. Its flesh is firm with very high brix (14).

FEATURES

Maturity:

Mid

Vine vigour:

Strong

Fruit size

1.4-1.6kg

Fruit shape:

Round to slightly oval

Internal fruit colour:

Dark orange/light red

Resistance:

HR Fom:0,1,2
IR Gc/Px:1,2,3,5

MELON PLANTING CALENDAR

Planting

Harvesting

PRODUCT	JAN	FEB	MAR	APR	MAY	JUN	JUL	AUG	SEP	OCT	NOV	DEC
NORTH QUEENSLAND												
CLASSIQUE		Planting	Planting		Harvesting	Harvesting			Planting		Harvesting	
EL PASO				Planting		Harvesting	Planting	Planting	Harvesting	Harvesting		
FLAVOR JOURNEY		Planting	Planting		Harvesting	Harvesting			Planting		Harvesting	
FURBETTO*		Planting	Planting		Harvesting	Harvesting			Planting		Harvesting	
GLACIER				Planting		Harvesting	Planting	Planting	Harvesting	Harvesting		
PORTUS				Planting		Harvesting	Harvesting					
RONCERO		Planting	Planting		Harvesting	Harvesting			Planting		Harvesting	
SV9790MC*		Planting	Planting		Harvesting	Harvesting			Planting		Harvesting	
VERDASCO		Planting	Planting		Harvesting	Harvesting			Planting		Harvesting	

* Please note: Due to the unique nature of these products, it is recommended they be grown only in the hottest planting windows of the year.



Please contact your local Regional Business Manager for growing recommendations for Central and South Queensland.

MELON PLANTING CALENDAR

Planting

Harvesting

PRODUCT	JAN	FEB	MAR	APR	MAY	JUN	JUL	AUG	SEP	OCT	NOV	DEC
NORTH WA, NORTHERN TERRITORY												
CLASSIQUE		Planting	Planting		Harvesting	Harvesting			Planting		Harvesting	
FLAVOR JOURNEY		Planting	Planting		Harvesting	Harvesting			Planting		Harvesting	
FLAVOR TIME		Planting	Planting		Harvesting	Harvesting			Planting		Harvesting	
FURBETTO*		Planting	Planting		Harvesting	Harvesting			Planting		Harvesting	
GLACIER				Planting		Harvesting	Planting	Planting	Harvesting	Harvesting		
PORTUS				Planting		Harvesting	Harvesting					
RONCERO		Planting	Planting		Harvesting	Harvesting			Planting		Harvesting	
SV9790MC*		Planting	Planting		Harvesting	Harvesting			Planting		Harvesting	
VERDASCO		Planting	Planting		Harvesting	Harvesting			Planting		Harvesting	
NSW, VIC, SA, SOUTH WA												
CLASSIQUE	Planting										Planting	Planting
EL PASO	Harvesting		Planting			Harvesting				Planting		Harvesting
FLAVOR JOURNEY	Planting										Planting	Planting
FLAVOR TIME		Harvesting	Harvesting								Planting	Planting
FURBETTO*	Planting										Planting	Planting
GLACIER	Harvesting	Harvesting	Planting			Harvesting				Planting		Harvesting
RONCERO	Planting										Planting	Planting
SVMF7774		Harvesting	Harvesting								Planting	Planting
SV9790MC*	Planting										Planting	Planting
VERDASCO	Planting										Planting	Planting

WATERMELON



JOY RIDE

Joy Ride is a large-fruited, striped, elongated watermelon suitable for all production areas. Its flesh is red, firm and sweet with reduced cracking. Under stressful conditions, Joy Ride exhibits less hard seed coats than competitor products, meaning less rejections at market and consumer end. We recommend utilising a short vine pollinator like Wingman, with this variety.

FEATURES

Maturity:

Mid

Vine vigour:

Strong

Fruit size

7–10kg

Fruit shape:

Elongated

Internal fruit colour:

Red

Resistance:

IR Fon:1



SUMMER BREEZE

Summer Breeze has improved production performance when grafted on RS841. It produces consistent 7–8kg fruit and has demonstrated it can travel well over long distances. Summer Breeze has superior deep red internals and exceptional eating quality.

FEATURES

Maturity:

Mid

Vine vigour:

Strong

Fruit size

7–8kg

Fruit shape:

Round

Internal fruit colour:

Red

Resistance:

HR Co:1

IR Fon:1



SWEET TRICK

This compact watermelon is small in size but big on appeal. It's dark green rind, seedless and firm flesh appeals to the modern-day consumer. Packed with flavour and weighing only 5–7kg, Sweet Trick is an easy to handle, fridge-friendly melon. It matures nearly a week earlier than larger melons and has reliable yield.

Sweet Trick's firm flesh with extended shelf life makes it ideal for export markets.

FEATURES

Maturity:

Early to mid

Vine vigour:

Strong

Fruit size

5–7kg

Fruit shape:

Round to oval

Internal fruit colour:

Red

Resistance:

HR Co:1

IR Fon:1

WATERMELON



ZEPPLIN

An attractive and versatile watermelon, Zeppelin ticks a lot of boxes. With strong vine vigour, allowing greater fruit protection. Dark red, firm, sweet flesh gives a delightful eating experience. Zeppelin is a highly adaptable variety, suited to all watermelon production areas in Australia.

JETSKI

Jetski is new to trial in Australia direct from the US pipeline. Early results have demonstrated excellent internal qualities, high tolerance to hollow heart and extremely good eating characteristics.

SHORELINE

Shoreline is a new to trial Striped Elongated Seedless hybrid from the US. The variety has distinctively firm flesh similar to Sweet Trick. Fruit rind is robust and thick making the variety excellent for long distance transport.

FEATURES

Maturity:
Mid to late

Vine vigour:
Strong

Fruit size
8.5kg +

Fruit shape:
Round

Internal fruit colour:
Deep red

Resistance:
IR Co:1/Fon:1

FEATURES

Maturity:
Mid

Vine vigour:
Strong

Fruit size
7-8kg

Fruit shape:
Elongated

Internal fruit colour:
Vibrant red

Resistance:
Full disease resistance claim to be confirmed

FEATURES

Maturity:
Late

Vine vigour:
Strong

Fruit size
8-9kg

Fruit shape:
Elongated

Internal fruit colour:
Red

Resistance:
Full disease resistance claim to be confirmed

POLLINATOR AND ROOTSTOCK



RS 841

CUCURBIT ROOTSTOCK

Interspecific squash hybrid rootstock suitable for watermelon and melon grafting. The ease of use for grafting and the ability to grow in stressful conditions make RS 841 the reference for the cucurbit rootstock market.

FEATURES

Resistance:

HR Foc:1,2/Fom:0,1,1.2,2/Fon:1,2/For/Ps

IR Rs/Vd/Ma/Mi/Mj

SVWY5387

WILD WATERMELON ROOTSTOCK

SVWY5387 is a wild watermelon type rootstock suitable for grafting with triploid scions. This rootstock has high resistance to fusarium races 1 and 2 (US). Trialled with commercial watermelon scions this variety has demonstrated excellent yield potential and increased vine vigour.

FEATURES

Maturity:

Scion dependent

Vine vigour:

Strong

Resistance:

HR Fon: 1,2

POLLINATOR AND ROOTSTOCK



WINGMAN

SEEDLESS POLLINATOR

Wingman is an extended flowering pollinator that enables maximum seedless watermelon yield through the prolific production of male flowers. It has small, grey, crushable fruit for increased safety while walking through the field and are easily distinguishable during harvest. The vine is light and flexible and does not compete with the seedless and enables flowers to be presented easily to bees.

FEATURES

Resistance:

IR Fon:1

SVWY2774

WINGMAN TYPE POLLINATOR

SVWY2774 is a new diploid pollinator, like Wingman but with the added benefit of powdery mildew resistance. Plant at 1:2 or 1:3 diploid to triploid ratio for best results. The vine maintains its flowering late into the season providing high quality pollen for maximum effect.

FEATURES

Resistance:

Full disease resistance claim to be confirmed

WATERMELON PLANTING CALENDAR

Planting Harvesting

PRODUCT	JAN	FEB	MAR	APR	MAY	JUN	JUL	AUG	SEP	OCT	NOV	DEC
NORTH QUEENSLAND												
JETSKI		Planting	Planting			Planting	Planting	Planting				
JOY RIDE		Planting	Planting			Planting	Planting	Planting				
SHORELINE		Planting	Planting			Planting	Planting	Planting				
SUMMER BREEZE		Planting	Planting			Planting	Planting	Planting				
SWEET TRICK		Planting	Planting			Planting	Planting	Planting				
ZEPPLIN		Planting	Planting			Planting	Planting	Planting				
CENTRAL QUEENSLAND												
JETSKI	Planting	Planting	Planting					Planting	Planting			
JOY RIDE	Planting	Planting	Planting					Planting	Planting			
SHORELINE	Planting	Planting	Planting					Planting	Planting			
SUMMER BREEZE	Planting	Planting	Planting					Planting	Planting			
SWEET TRICK	Planting	Planting	Planting					Planting	Planting			
ZEPPLIN	Planting	Planting	Planting					Planting	Planting			

WATERMELON PLANTING CALENDAR

Planting

Harvesting

PRODUCT	JAN	FEB	MAR	APR	MAY	JUN	JUL	AUG	SEP	OCT	NOV	DEC
NORTH WA, NORTHERN TERRITORY												
JETSKI			Planting	Planting	Planting	Planting	Planting	Planting	Planting			
					Harvesting	Harvesting	Harvesting	Harvesting	Harvesting	Harvesting	Harvesting	
JOY RIDE			Planting	Planting	Planting	Planting	Planting	Planting				
					Harvesting	Harvesting	Harvesting	Harvesting	Harvesting	Harvesting	Harvesting	
SHORELINE			Planting	Planting	Planting	Planting	Planting	Planting				
					Harvesting	Harvesting	Harvesting	Harvesting	Harvesting	Harvesting	Harvesting	
SUMMER BREEZE			Planting	Planting	Planting	Planting	Planting	Planting				
					Harvesting	Harvesting	Harvesting	Harvesting	Harvesting	Harvesting	Harvesting	
SWEET TRICK			Planting	Planting	Planting	Planting	Planting	Planting				
					Harvesting	Harvesting	Harvesting	Harvesting	Harvesting	Harvesting	Harvesting	
ZEPPLIN			Planting	Planting	Planting	Planting	Planting	Planting				
					Harvesting	Harvesting	Harvesting	Harvesting	Harvesting	Harvesting	Harvesting	
NSW, VIC, SA, SOUTH EAST QLD, SOUTH WA												
JETSKI	Planting	Planting								Planting	Planting	Planting
	Harvesting	Harvesting	Harvesting	Harvesting	Harvesting	Harvesting						Harvesting
JOY RIDE	Planting	Planting								Planting	Planting	Planting
	Harvesting	Harvesting	Harvesting	Harvesting	Harvesting	Harvesting						Harvesting
SHORELINE	Planting	Planting								Planting	Planting	Planting
	Harvesting	Harvesting	Harvesting	Harvesting	Harvesting	Harvesting						Harvesting
SUMMER BREEZE	Planting	Planting								Planting	Planting	Planting
	Harvesting	Harvesting	Harvesting	Harvesting	Harvesting	Harvesting						Harvesting
SWEET TRICK	Planting	Planting								Planting	Planting	Planting
	Harvesting	Harvesting	Harvesting	Harvesting	Harvesting	Harvesting						Harvesting
ZEPPLIN	Planting	Planting								Planting	Planting	Planting
	Harvesting	Harvesting	Harvesting	Harvesting	Harvesting	Harvesting						Harvesting

VARIETY SUMMARY

VARIETIES	MATURITY	VINE VIGOUR	FRUIT SIZE (KG)	FRUIT SHAPE	INTERNAL FRUIT COLOUR	RESISTANCE
CANTALOUPE						
SVMF7774	Mid to late	Strong	2.0-2.6	Round to slightly oval	Dark orange	Full disease resistance claim to be confirmed
	SVMF7774 is a main season cantaloupe, with a strong net, orange flesh and a tight cavity.					
FLAVOUR TIME™	Mid	Medium	2.2- 2.8	Round-Oval	Dark orange	HR CYSDV/Fom:0-2/A
	Flavor Time™ is cantaloupe hybrid possessing a new maturity indicator concept.					
ITALIAN						
FURBETTO	Mid	Medium	1.4-1.6	Round-Oval	Dark orange	HR Fom:0-2/Px:1,2,5
	Furbetto is a single serve long shelf life Italian cantaloupe suitable only to the warmest production windows.					
PIEL DE SAPO						
PORTUS	Early to Mid	Medium	2.0-2.2	Oval	White	HR MNSV/Fom:0,1/Ag IR Px:1,2,3,5A,5
	Portus is a new Piel de Sapo melon.					
RONCERO	Early to Mid	Medium	2.3-2.5	Oval	White	HR MNSV/Fom:0,1/Px:1,2,5/Ag IR Px:3.5A
	Roncero is a new Piel de Sapo melon.					
GALIA						
VERDASCO	Mid	Medium	1.4-1.6	Round-Oval	Pale green to green	HR MNSV/Fom:0,1/Ag IR Gc:1/Px:1,2,5,Px3.5A
	Verdasco is a long shelf life Galia melon variety suitable for warm season production conditions.					
HONEYDEW						
CLASSIQUE	Mid to late	Strong	1.6-2.0	Round	Green	HR Fom:0,2 IR Px:1
	Classique is a very firm, crisp, green-fleshed melon.					
FLAVOR JOURNEY	Mid to Late	Strong	1.9-2.2	Round to slightly oval	Green	IR Px:3.5,5/Ag
	Flavor Journey is a green-fleshed, long shelf life honeydew with a higher brix.					
GLACIER	Mid	Strong	1.8-2.2	Oval	Green	–
	Glacier produces oval, medium-to-large fruit with excellent external appearance.					
EL PASO	Mid	Medium	1.8-2.2	Round to oval	White	HR Fom:0,2
	El Paso produces large fruit with crisp white flesh.					
CHARENTAIS						
SV9790MC	Mid	Strong	1.6-2	Round to slightly oval	Dark orange/ blood red	HR Fom:0,1,2 IR Gc/Px:1,2,3,5
	Charentais melon with dark, orange-to-red flesh and a small, tight cavity. Its flesh is firm with very high brix (14°).					

VARIETY SUMMARY

VARIETIES	MATURITY	VINE VIGOUR	FRUIT SIZE (KG)	FRUIT SHAPE	INTERNAL FRUIT COLOUR	RESISTANCE
WATERMELON						
JOY RIDE	Mid	Strong	7–10	Elongated	Red	IR Fon:1
	Joy Ride is a large-fruited, striped, elongated watermelon suitable for all production areas. Its flesh is red, firm and sweet with reduced cracking.					
SUMMER BREEZE	Mid	Strong	7–8	Round	Red	HR Co:1 IR Fon:1
	Summer Breeze has excellent eating quality and has demonstrated it can travel well over long distances. Improved production performance when grafted on RS841.					
SWEET TRICK	Early to mid	Strong	5–7	Round to oval	Deep red	HR Co:1 IR Fon:1
	This compact, juicy watermelon is small in size but big on appeal. With its dark green rind, smaller size, seedless red flesh and sweet taste, Sweet Trick appeals to the modern consumer's tastes and shopping habits.					
ZEPPLIN	Mid to late	Strong	8.5 +	Round	Deep red	IR Co:1/Fon:1
	Zepplin is a large, red-fleshed, seedless watermelon with a dark-green rind. Suitable for all production areas.					
JETSKI	Mid	Strong	7–8	Elongated	Vibrant red	Full disease resistance claim to be confirmed
	Jetski is new to trial in Australia direct from the US pipeline. Early results have demonstrated excellent internal qualities, high tolerance to hollow heart and extremely good eating characteristics.					
SHORELINE	Late	Strong	8–9	Elongated	Red	Full disease resistance claim to be confirmed
	Shoreline is a new to trial SES hybrid from the US. The variety has distinctively firm flesh similar to Sweet Trick. Fruit rind is robust and thick making the variety excellent for long distance transport.					

POLLINATOR & ROOTSTOCKS			
WINGMAN	Watermelon pollinator	NA	Full disease resistance claim to be confirmed.
	Wingman is an extended flowering pollinator that enables maximum seedless watermelon yield through the prolific production of male flowers.		
RS841	Squash	Melon, Watermelon, Cucumber	HR Foc:1,2/Fom:0,1,1,2,2/Fon:1,2/For/Ps IR Rs/Vd/Ma/Mi/Mj
	Interspecific squash hybrid rootstock suitable for watermelon and melon grafting.		
SWWY5387	Wild Watermelon	Watermelon	HR Fon: 1,2
	SWWY5387 is a wild watermelon type rootstock suitable for grafting with triploid scions.		
SWWY2774	Watermelon pollinator	NA	IR Fon:1
	SWWY2774 is a new Wingman type diploid pollinator with the added benefit of powdery mildew resistance. Plant at 1:2 or 1:3 diploid to triploid ratio for best results. The vine maintains its flowering late into the season providing high quality pollen for maximum effect.		

RESISTANCE CODES

CODE	SCIENTIFIC NAME	ENGLISH NAME
MELON		
Ag	<i>Aphis gossypii</i> (Cotton aphid)	Aphids
Fom	<i>Fusarium oxysprum f.sp. Melonis</i>	Fusarium wilt
Gc (PMe)	<i>Golovinomyces cichoracearum</i> (was <i>Erysiphe cichoracearum</i>)	Powdery mildew
MNSV		Melon necrotic spot virus
Px (PM)	<i>Podosphaera xanthii</i> (was <i>Sphaerotheca fulginea</i>)	Powdery mildew
CYSDV		Cucurbit yellow stunting disorder virus
WATERMELON		
Co	<i>Colletotrichum orbiculare</i>	Anthrachnose
Fon	<i>Fusarium oxysporum f. sp. niveum</i>	Fusarium wilt
POLLINATOR & ROOTSTOCKS		
Ma/Mi/Mj	<i>Meloidogyne arenaria, incognita, javanica</i>	Root knot nematode
Rs	<i>Rhizoctonia solani</i>	Rhizoctonia root rot
Vd	<i>Verticillium dahliae</i>	Verticillium wilt



COMMERCIAL/SALES

DANIELLE BULLER

Seminis Sales Manager
Australia & New Zealand
0400 949 065
danielle.buller@bayer.com



MARKET DEVELOPMENT

DAVID CAMPBELL

Market Development Lead
Australia & New Zealand
0400 304 766
david.campbell@bayer.com



Scan the QR code
to find your local
representative

Meet the Team



For more information visit
vegetables.bayer.com
or contact your local representative

Vegetable Seeds Customer Service

Ph: 1800 364 846

Email: vegetables.australia@bayer.com

Bayer Australia

Head Office: Level 1, 8 Redfern Rd,

Hawthorn East VIC 3123

Phone: +61 3 9248 6888



All information concerning the varieties given orally or in writing by Bayer Australia Pty Ltd. or its employees or agents, including the information in this product guide, is given in good faith, but is not to be taken as a representation or warranty by Bayer Australia Pty Ltd. as to the performance or suitability of those varieties which may depend on local climatic conditions and other factors. Bayer Australia Pty Ltd. assumes no liability for any such information. This information shall not form part of any contract with Bayer Australia Pty Ltd. unless otherwise specified in writing.

Copyright © 2004–2023 Bayer Group. All rights reserved. Seminis and DeRuiter are registered trademarks of Bayer Group.

The terms and abbreviations used by Bayer Australia Pty Ltd to describe the reaction of plants obtained from the seeds to pests or pathogens and to abiotic stresses such as (High/standard resistance (HR), moderate/intermediate resistance (IR), Immunity, Susceptibility and Tolerance shall have the meaning given by the International Seed Federation and can be found on ISF website (www.worldseed.org).

Individual results may vary, and performance may vary from location to location and from year to year. This result may not be an indicator of results you may obtain, as local growing, soil and weather conditions may vary. Growers should evaluate data from multiple locations and years whenever possible.